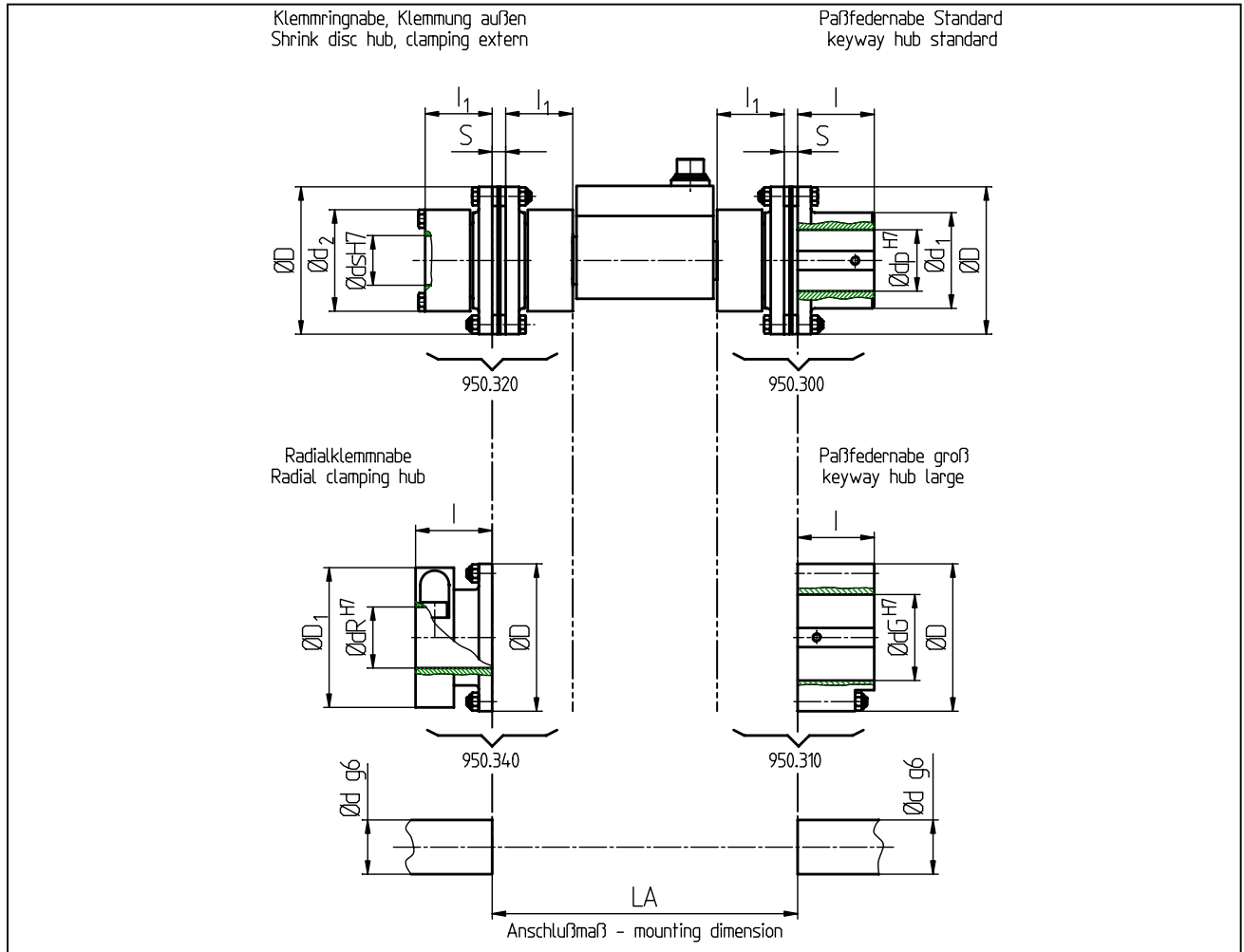


Drehmomentsensor Typ DR-2112, DR-2208 mit Kupplung 950.3_0
torque sensor type DR-2112, DR-2208 with coupling 950.3_0



TECHNISCHE DATEN - specifications

Typ 95...

| Größe - size | Nenn Drehmoment - nominal torque | | Maximale Drehzahl - max. speed | |
|--------------|----------------------------------|--|-----------------------------------|--|
| | M_{nom} [Nm] | | n_{max} [min ⁻¹] | |
| 16 | 160 | | 13600 | |
| 25 | 250 | | 11800 | |
| 64 | 640 | | 8500 | |
| 100 | 1000 | | 7300 | |
| 300 | 3000 | | 6200 | |
| 500 | 5000 | | 5200 | |
| 1400 | 14000 | | 3800 | |

Die Wuchtgüte der Kupplung liegt bei mittleren Drehzahlen im Bereich Q 6,3 gemäss VDI-Richtlinien 2060.
 Balancing quality of the coupling Q 6,3 according to VDI-characteristics 2060 with medium speed.

| Messbereich nominal torque [Nm] | Typ 95.. Größe size | Abmessungen - dimensions [mm] | | | | | | | | | | | | | | | | | |
|---------------------------------------|------------------------------|-------------------------------|-----|-----|-----|-----|-----|-----|-----|-----|-----|-----|-----|-----|-----|------|-------|---|----|
| | | D | | D1 | | ds | | dP | | dR | | dG | | d1 | d2 | l | l1 | s | LA |
| | | min | max | min | max | min | max | min | max | min | max | min | max | | | | | | |
| 50/100 | 16 | 77 | 73 | 14 | 26 | 16 | 32 | 25 | 35 | 30 | 45 | 50 | 53 | 40 | 35 | 7,1 | 159,7 | | |
| 200 | 25 | 89 | 84 | 20 | 36 | 20 | 40 | 30 | 40 | 35 | 55 | 60 | 64 | 45 | 40 | 7,2 | 177,9 | | |
| 500 | 64 | 123 | 115 | 30 | 45 | 30 | 55 | 35 | 55 | 55 | 75 | 80 | 84 | 65 | 50 | 9,6 | 202,7 | | |
| 1000 | 100 | 143 | 135 | 35 | 55 | 35 | 70 | 40 | 68 | 65 | 95 | 100 | 104 | 75 | 55 | 10 | 276 | | |
| 2000 | 300 | 167 | x | 50 | 85 | 45 | 90 | x | x | x | x | 121 | 164 | 90 | 75 | 11,2 | 399,4 | | |
| 5000 | 500 | 198 | x | 60 | 100 | 55 | 105 | x | x | x | x | 141 | 198 | 100 | 95 | 12 | 401 | | |
| 10000 | 1400 | 274 | x | 80 | 140 | 75 | 140 | x | x | x | x | 190 | 274 | 150 | 130 | 16 | 502 | | |

Bei Bestellung bitte immer den gewünschten Ø d angeben. - Please specify requested bore Ø d at order.
 x = nicht lieferbar - not available